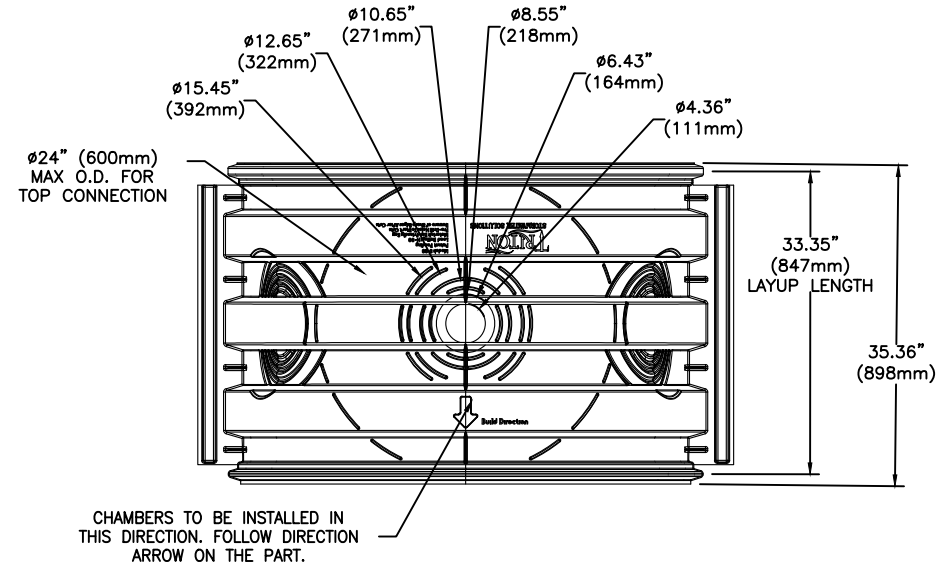
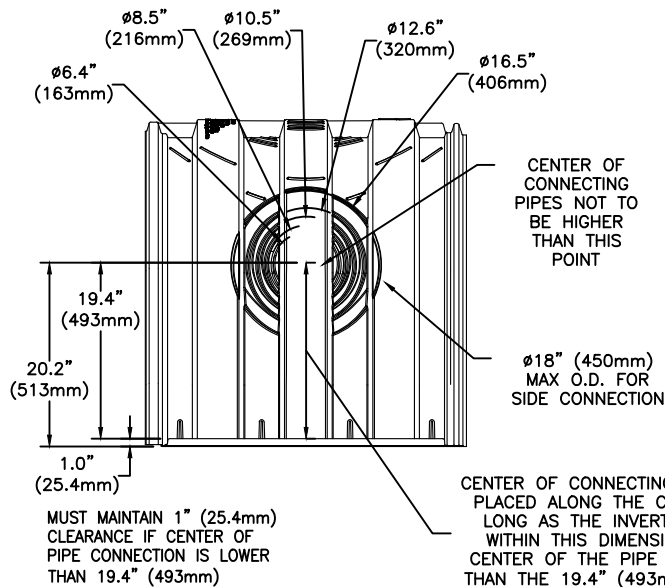
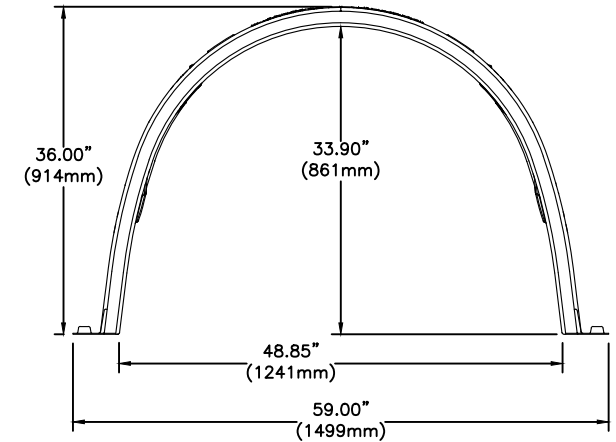


S-29 CHAMBER SPECS	
NOMINAL DIMENSIONS (LAYUP LENGTH X WIDTH X HEIGHT)	33.35" X 59.00" X 36.00" (847mm X 1499mm X 914mm)
BARE CHAMBER STORAGE	27.35 CUBIC FEET (0.774 CUBIC METERS)
*MIN INSTALLED STORAGE	41.05 CUBIC FEET (1.162 CUBIC METERS)
CHAMBER WEIGHT	32 lbs (14.515 kg)
STORAGE PER LINEAR UNIT WITHOUT STONE	9.84 FT ³ /FT (0.914 M ³ /M)
STORAGE PER LINEAR UNIT WITH STONE	14.77 FT ³ /FT (1.372 M ³ /M)

*ASSUMING A MIN OF 6" (152mm) STONE ABOVE AND BELOW AND 7.5" (191mm) BETWEEN ROWS WITH 40% STONE POROSITY (DOES NOT INCLUDE 12" (305mm) PERIMETER STONE VOLUME)

NOTE: S-29 CHAMBER DETAILS TESTED AND RATED TO EXCEED HS-25 LOAD CONDITIONS WITH 18" (457mm) OF COVER AND NO PAVEMENT.



CONCEPTUAL PLAN DISCLAIMER
THIS GENERIC DETAIL DOES NOT ENCOMPASS THE SIZING, FIT, AND APPLICABILITY OF THE TRITON CHAMBER SYSTEM FOR THIS SPECIFIC PROJECT. IT IS THE ULTIMATE RESPONSIBILITY OF THE DESIGN ENGINEER TO ASSURE THAT THE STORMWATER SYSTEM DESIGN IS IN FULL COMPLIANCE WITH ALL APPLICABLE LAWS AND REGULATIONS. TRITON PRODUCTS MUST BE DESIGNED AND INSTALLED IN ACCORDANCE WITH TRITON'S MINIMUM REQUIREMENTS. TRITON STORMWATER SOLUTIONS DOES NOT APPROVE PLANS, SIZING, OR SYSTEM DESIGNS. THE DESIGN ENGINEER IS RESPONSIBLE FOR ALL DESIGN DECISIONS.

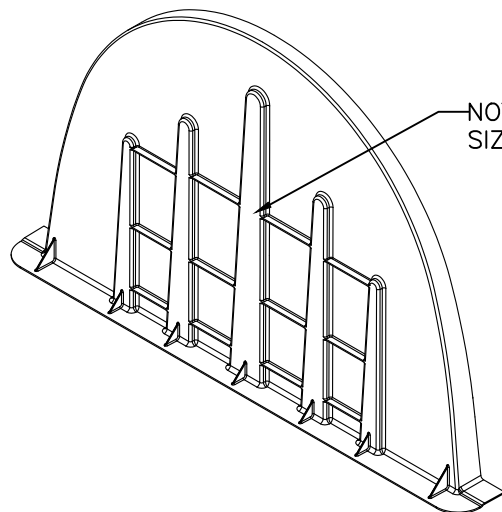


7600 EAST GRAND RIVER, STE. 195
BRIGHTON, MI 48114
PHONE: (810) 222-7652 • FAX: (810) 222-1769
WWW.TRITONSWS.COM

S-29 CHAMBER DETAIL

TRITON - STANDARD DETAILS

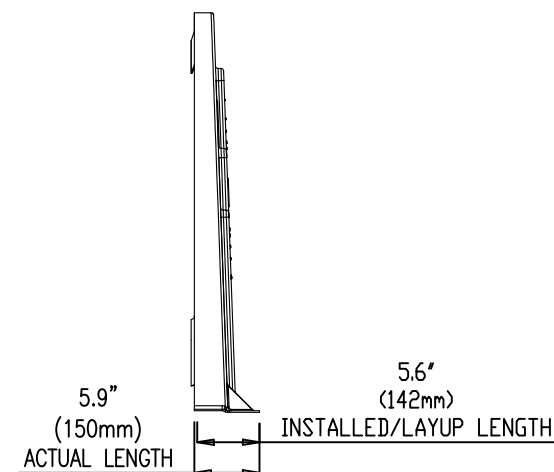
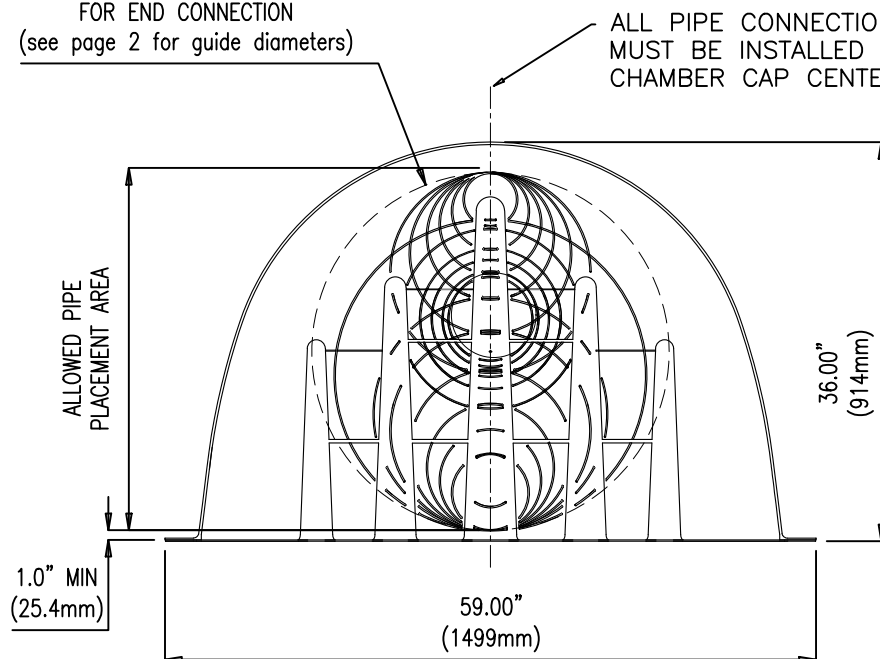
REVISED:
03-24-20 JWM



S-29 END CAP SPECS	
NOMINAL DIMENSIONS (LAYUP LENGTH X WIDTH X HEIGHT)	5.90" X 59.00" X 36.00" (150mm X 1499mm X 914mm)
BARE END CAP STORAGE	1.031 CUBIC FEET (0.029 CUBIC METERS)
*MIN INSTALLED STORAGE	4.98 CUBIC FEET (0.141 CUBIC METERS)
*ASSUMING A MIN OF 6" (152mm) STONE ABOVE AND BELOW AND 7.5" (191mm) BETWEEN ROWS WITH 40% STONE POROSITY (DOES NOT INCLUDE 12" (305mm) PERIMETER STONE VOLUME)	

ø32" (810mm) MAX O.D.
FOR END CONNECTION
(see page 2 for guide diameters)

ALL PIPE CONNECTIONS
MUST BE INSTALLED ALONG
CHAMBER CAP CENTERLINE.



THE END CAP FITS UP ON THE OUTSIDE
OF THE S-29 CHAMBER. REFER TO
INSTALLATION MANUAL FOR FURTHER DETAIL.

CONCEPTUAL PLAN DISCLAIMER
THIS GENERIC DETAIL DOES NOT ENCOMPASS THE SIZING, FIT, AND APPLICABILITY OF THE TRITON CHAMBER SYSTEM FOR THIS SPECIFIC PROJECT. IT IS THE ULTIMATE RESPONSIBILITY OF THE DESIGN ENGINEER TO ASSURE THAT THE STORMWATER SYSTEM DESIGN IS IN FULL COMPLIANCE WITH ALL APPLICABLE LAWS AND REGULATIONS. TRITON PRODUCTS MUST BE DESIGNED AND INSTALLED IN ACCORDANCE WITH TRITON'S MINIMUM REQUIREMENTS. TRITON STORMWATER SOLUTIONS DOES NOT APPROVE PLANS, SIZING, OR SYSTEM DESIGNS. THE DESIGN ENGINEER IS RESPONSIBLE FOR ALL DESIGN DECISIONS.



7600 EAST GRAND RIVER, STE.195
BRIGHTON, MI 48114
PHONE: (810) 222-7652 • FAX: (810) 222-1769
WWW.TRITONSW.COM

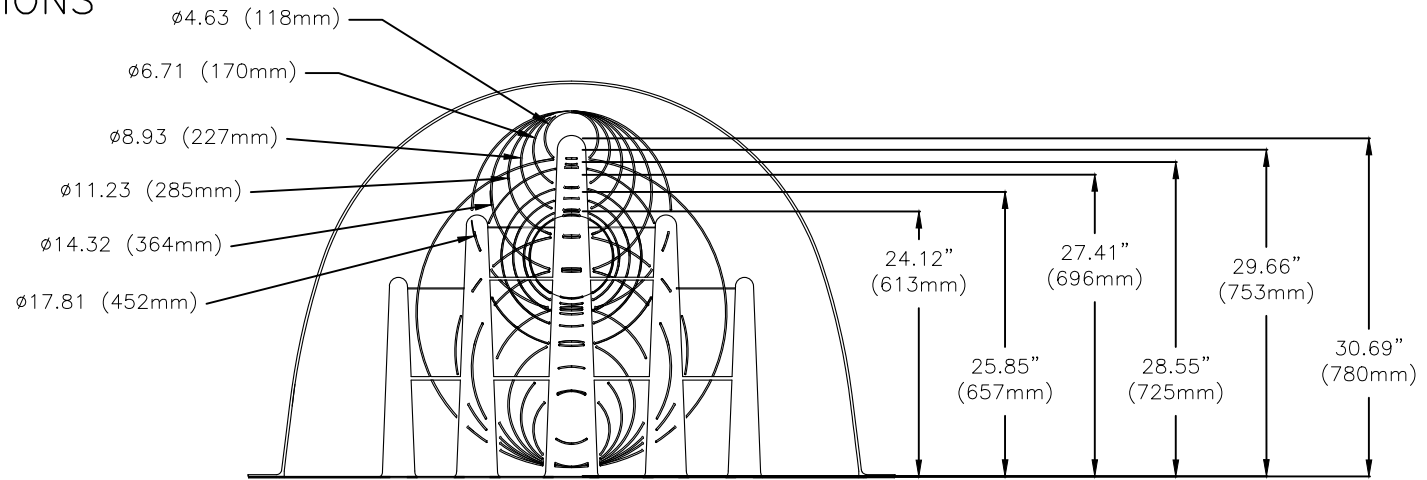
S-29 CHAMBER END CAP DETAIL

TRITON - STANDARD DETAILS

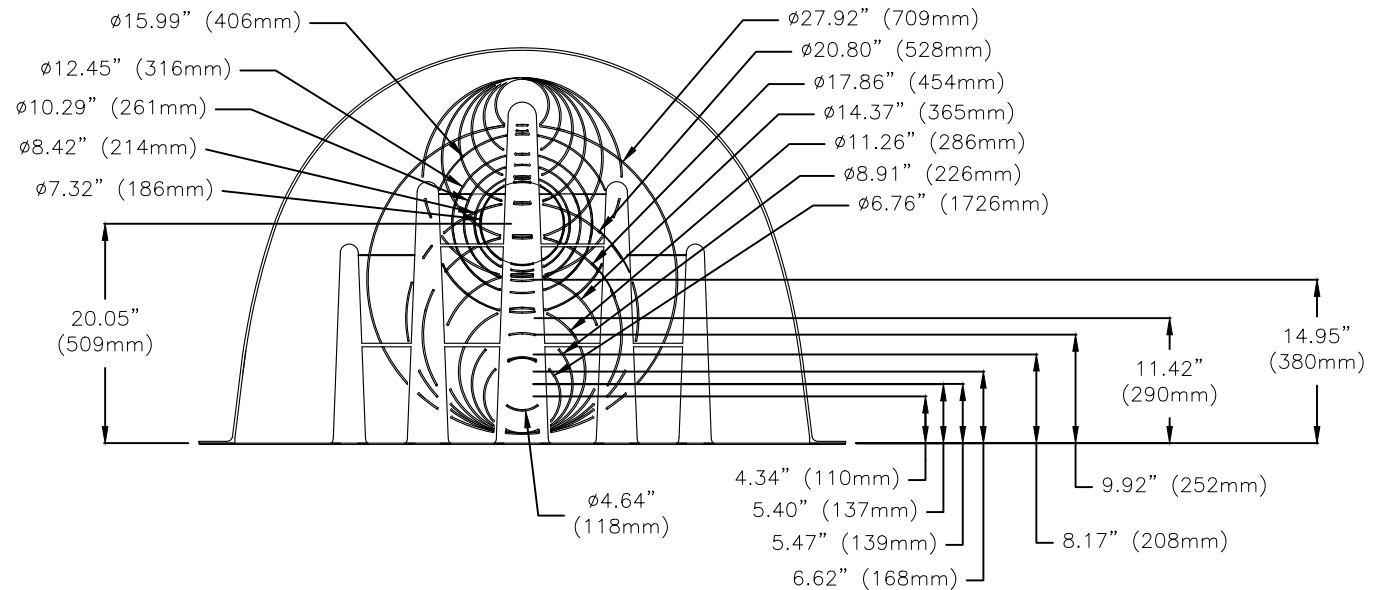
PAGE 1 OF 2

REVISED:
02-26-16 JWM

S-29 END CAP: TOP HOLE DIMENSIONS



S-29 END CAP: CENTER AND BOTTOM HOLE DIMENSIONS



CONCEPTUAL PLAN DISCLAIMER
THIS GENERIC DETAIL DOES NOT ENCOMPASS THE SIZING, FIT, AND APPLICABILITY OF THE TRITON CHAMBER SYSTEM FOR THIS SPECIFIC PROJECT. IT IS THE ULTIMATE RESPONSIBILITY OF THE DESIGN ENGINEER TO ASSURE THAT THE STORMWATER SYSTEM DESIGN IS IN FULL COMPLIANCE WITH ALL APPLICABLE LAWS AND REGULATIONS. TRITON PRODUCTS MUST BE DESIGNED AND INSTALLED IN ACCORDANCE WITH TRITON'S MINIMUM REQUIREMENTS. TRITON STORMWATER SOLUTIONS DOES NOT APPROVE PLANS, SIZING, OR SYSTEM DESIGNS. THE DESIGN ENGINEER IS RESPONSIBLE FOR ALL DESIGN DECISIONS.



7600 EAST GRAND RIVER, STE. 195
BRIGHTON, MI 48114
PHONE: (810) 222-7652 • FAX: (810) 222-1769
WWW.TRITONSW.COM

S-29 CHAMBER END CAP DETAIL

TRITON - STANDARD DETAILS

PAGE 2 OF 2

REVISED:
02-26-16 JWM

TRITON S-29 PRODUCT SPECIFICATIONS

1.0 General

- 1.1 Triton chambers are designed to control stormwater runoff. As a subsurface retention or detention system, Triton chambers retain and allow effective infiltration of water into the soil. As a subsurface detention system, Triton chambers detain and allow for the metered flow of water to an outfall.

2.0 Chamber Parameters

- 2.1 The chamber shall be injection compression molded of a structural grade 1010 green soy resin composite to be inherently resistant to environmental stress cracking (ESCR), creep, and to maintain proper stiffness through temperature ranges of -40 degrees Fahrenheit to 180 degrees Fahrenheit (-40 degrees Celsius to 82.2 degrees Celsius).
- 2.2 The nominal chamber dimensions of the Triton S-29 shall be 36.0 inches tall (914 millimeters), 59.0 inches wide (1499 millimeters) and 35.36 inches long (898 millimeters). Lay-up length is 33.35 inches (847 millimeters).
- 2.3 The chamber shall have an elliptical curved section profile.
- 2.4 The chamber shall be open-bottomed.
- 2.5 The chamber shall incorporate an overlapping corrugation joint system to allow chamber rows to be constructed.
- 2.6 The nominal storage volume of a Triton S-29 chamber shall be 41.05 cubic feet (1.162 cubic meters) per chamber when installed per Triton's typical details. This equates to 2.67 cubic feet (0.075 cubic meters) of storage per square foot of bed. This does not include perimeter stone.
- 2.7 The chamber shall have both of its ends open to allow for unimpeded hydraulic flows and visual inspections down a row's entire length.
- 2.8 The chamber shall have five corrugations to achieve strengths defined above.
- 2.9 The chamber shall have five circular and elliptical, indented and raised, surfaces on the top to the chamber for a maximum of 24 inch (610 millimeter) diameter optional top feed inlets, inspection ports and/or clean-out access ports.
- 2.10 The chamber shall have five elliptical, indented, surfaces on either side of the chamber for optional feed inlets, outlets. Capable of accepting pipe O.D. up to 18 inches (450 millimeters).
- 2.11 The chamber shall be analyzed, designed and field tested using AASHTO LRFD bridge design specifications 1. Design live load shall meet or exceed the AASHTO HS-25 or a rear axle load of 40,000 pounds (18,143 kg). Design shall consider earth and live loads without pavement as appropriate for the minimum 18 inches (457 millimeters) of total cover to a maximum total cover of 50 feet (15.24 meters).

- 2.12 The chamber shall be manufactured in an ISO 9001:2008 certified facility

- 2.13 The service life of the product is over 60 years under a constant sustained load of 10,000 PSI (68.95 Mpa) which is equal to the H-20 loading condition. Under typical loading conditions the Chamber and End Cap has a useful life span of 120 years from date of when manufactured.

3.0 End Cap Parameters

- 3.1 The end cap shall be Injection Compression molded of 1010 green soy resin to be inherently resistant to environmental stress cracking (ESCR), creep and to maintain proper stiffness through temperature ranges of -40 degrees Fahrenheit to 180 degrees Fahrenheit (-40 degrees Celsius to 82.2 degrees Celsius).
- 3.2 The end cap shall be designed to fit over the last corrugation of a chamber, which allows: the capping of each end of the chamber row.
- 3.3 The end cap shall have six upper saw guides capable of accepting pipe O.D. up to 17.81 inches (452 millimeters), five middle saw guides capable of accepting pipe O.D. up to 15.99 inches (406mm) and eight lower saw guides capable of accepting pipe O.D. up to 27.92 inches (709 millimeters) to allow easy cutting for various diameters of pipe that may be used to inlet or outlet the system. See end cap detail for further details.
- 3.4 The end cap shall have excess structural adequacies to allow cutting an orifice of any size at any invert elevation.
- 3.5 The primary face of an end cap shall have five corrugations and be angled outward to resist horizontal loads generated near the edges of beds.
- 3.6 The end cap shall be manufactured in an ISO 9001:2008 certified facility.
- 3.7 The service life of the product to be over 60 years under a sustained load of 10,000 PSI (68.95 Mpa) which is equal to the H-20 loading condition.
- 3.8 The nominal storage volume of a Triton S-29 end cap shall be 4.98 cubic feet (0.141 cubic meters) per end cap when installed per triton's typical details. This equates to 1.83 cubic feet (0.052 cubic meters) of storage per square foot of bed.
- 4.0 **Installation**
- 4.1 Installation shall be in accordance with the latest Triton Installation manual that can be downloaded from the Triton website: www.tritonsws.com/support/downloads

CONCEPTUAL PLAN DISCLAIMER
THIS GENERIC DETAIL DOES NOT ENCOMPASS THE SIZING, FIT, AND APPLICABILITY OF THE TRITON CHAMBER SYSTEM FOR THIS SPECIFIC PROJECT. IT IS THE ULTIMATE RESPONSIBILITY OF THE DESIGN ENGINEER TO ASSURE THAT THE STORMWATER SYSTEM DESIGN IS IN FULL COMPLIANCE WITH ALL APPLICABLE LAWS AND REGULATIONS. TRITON PRODUCTS MUST BE DESIGNED AND INSTALLED IN ACCORDANCE WITH TRITON'S MINIMUM REQUIREMENTS. TRITON STORMWATER SOLUTIONS DOES NOT APPROVE PLANS, SIZING, OR SYSTEM DESIGNS. THE DESIGN ENGINEER IS RESPONSIBLE FOR ALL DESIGN DECISIONS.



7600 EAST GRAND RIVER, STE.195
BRIGHTON, MI 48114
PHONE: (810) 222-7652 FAX: (810) 222-1769
WWW.TRITONSW.COM

S-29 PRODUCT SPECIFICATIONS

TRITON - STANDARD DETAILS

REVISED:
08-18-20 JWM